



# MRP-L10 Polyclonal Antibody

<b>Catalog No</b>	YP-Ab-03973
<b>Isotype</b>	IgG
<b>Reactivity</b>	Human;Rat;Mouse;
<b>Applications</b>	WB;IHC;IF;ELISA
<b>Gene Name</b>	MRPL10
<b>Protein Name</b>	39S ribosomal protein L10 mitochondrial
<b>Immunogen</b>	The antiserum was produced against synthesized peptide derived from human MRPL10. AA range:211-260
<b>Specificity</b>	MRP-L10 Polyclonal Antibody detects endogenous levels of MRP-L10 protein.
<b>Formulation</b>	Liquid in PBS containing 50% glycerol, 0.5% BSA and 0.02% sodium azide.
<b>Source</b>	Polyclonal, Rabbit,IgG
<b>Purification</b>	The antibody was affinity-purified from rabbit antiserum by affinity-chromatography using epitope-specific immunogen.
<b>Dilution</b>	WB: 1/500 - 1/2000. IHC: 1/100 - 1/300. ELISA: 1/20000.. IF 1:50-200
<b>Concentration</b>	1 mg/ml
<b>Purity</b>	≥90%
<b>Storage Stability</b>	-20°C/1 year
<b>Synonyms</b>	MRPL10; MRPL8; RPML8; 39S ribosomal protein L10; mitochondrial; L10mt; MRP-L10; 39S ribosomal protein L8, mitochondrial; L8mt; MRP-L8
<b>Observed Band</b>	29kD
<b>Cell Pathway</b>	Mitochondrion .
<b>Tissue Specificity</b>	Pancreas,Skin,
<b>Function</b>	similarity:Belongs to the ribosomal protein L10P family.,subunit:Component of the mitochondrial ribosome large subunit (39S) which comprises a 16S rRNA and about 50 distinct proteins.,
<b>Background</b>	Mammalian mitochondrial ribosomal proteins are encoded by nuclear genes and help in protein synthesis within the mitochondrion. Mitochondrial ribosomes (mitoribosomes) consist of a small 28S subunit and a large 39S subunit. They have an estimated 75% protein to rRNA composition compared to prokaryotic ribosomes, where this ratio is reversed. Another difference between mammalian mitoribosomes and prokaryotic ribosomes is that the latter contain a 5S rRNA. Among different species, the proteins comprising the mitoribosome differ greatly in sequence, and sometimes in biochemical properties, which prevents easy recognition by sequence homology. This gene encodes a 39S subunit protein. Sequence analysis identified three transcript variants that encode two different isoforms. A pseudogene corresponding to this gene is found on chromosome 5q.



[provided by RefSeq, Nov 2010],

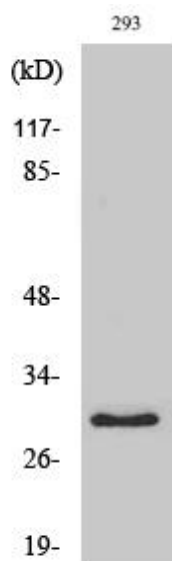
**matters needing attention**

Avoid repeated freezing and thawing!

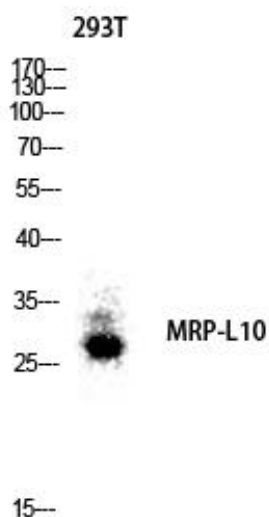
**Usage suggestions**

This product can be used in immunological reaction related experiments. For more information, please consult technical personnel.

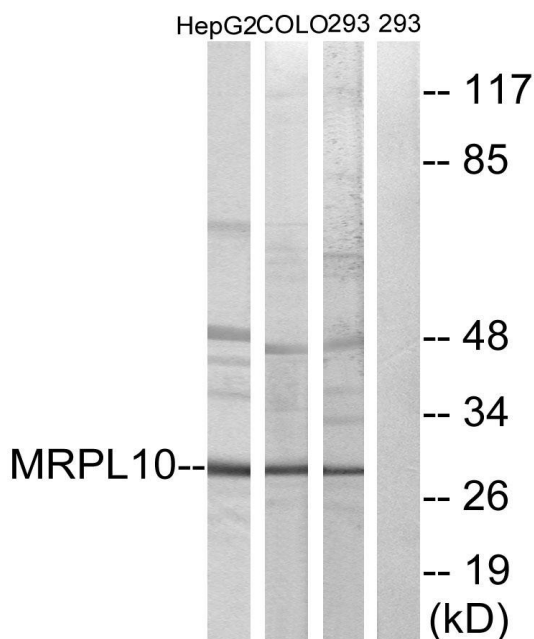
**Products Images**



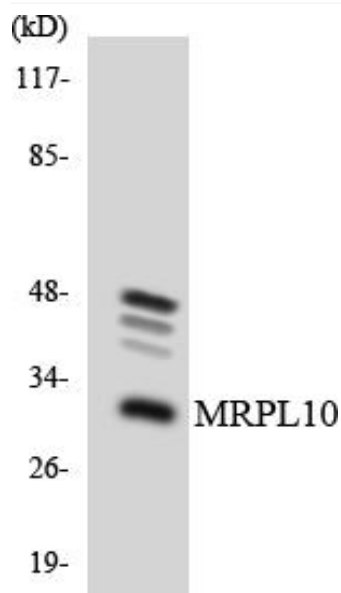
Western Blot analysis of various cells using MRP-L10 Polyclonal Antibody diluted at 1:1000



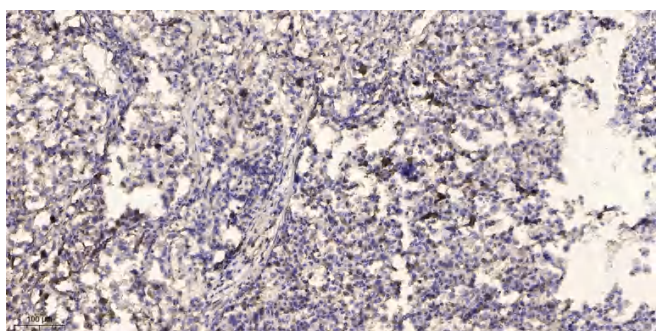
Western blot analysis of 293T lysis using MRP-L10 antibody. Antibody was diluted at 1:1000



Western blot analysis of lysates from 293, HepG2, and COLO cells, using MRPL10 Antibody. The lane on the right is blocked with the synthesized peptide.



Western blot analysis of the lysates from HT-29 cells using MRPL10 antibody.



Immunohistochemical analysis of paraffin-embedded human Squamous cell carcinoma of lung. 1, Antibody was diluted at 1:200(4° overnight). 2, Tris-EDTA,pH9.0 was used for antigen retrieval. 3,Secondary antibody was diluted at 1:200(room temperature, 45min).